

HIGH IMAGE CLASS A BUILDING WITH VIEWS



\$2.15 / RSF / PROMOTIONAL RATE*
BROKER BONUS AVAILABLE*

*For leases of at least 3+ years


VALLEVISTA

515 MARIN STREET | THOUSAND OAKS | CALIFORNIA
Full Building and Landscape Renovations Recently Completed

**nearon**

**LEE & ASSOCIATES**
COMMERCIAL REAL ESTATE SERVICES



PROPERTY HIGHLIGHTS

- 4 Story Class "A" Landmark Office Building Consisting of 62,770 RSF
- On-Site Management Office
- Private Balconies with Amazing Views of the Conejo Valley
- Major Renovations Recently Completed including Entirely New Common Area Finishes, Landscaping & Additional Parking
- Walking Distance to The Oaks Mall, Jans Marketplace & Dozens of other Retail & Hospitality Amenities
- Fiber Available
- On Site Secured Storage Available
- Immediate Access to the 23 & 101 Freeways
- Up to 3.9/1000 Reserved Covered & Free Surface Parking Available
- Reserved Covered Stall \$60 per Month

PENTHOUSE AVAILABILITY

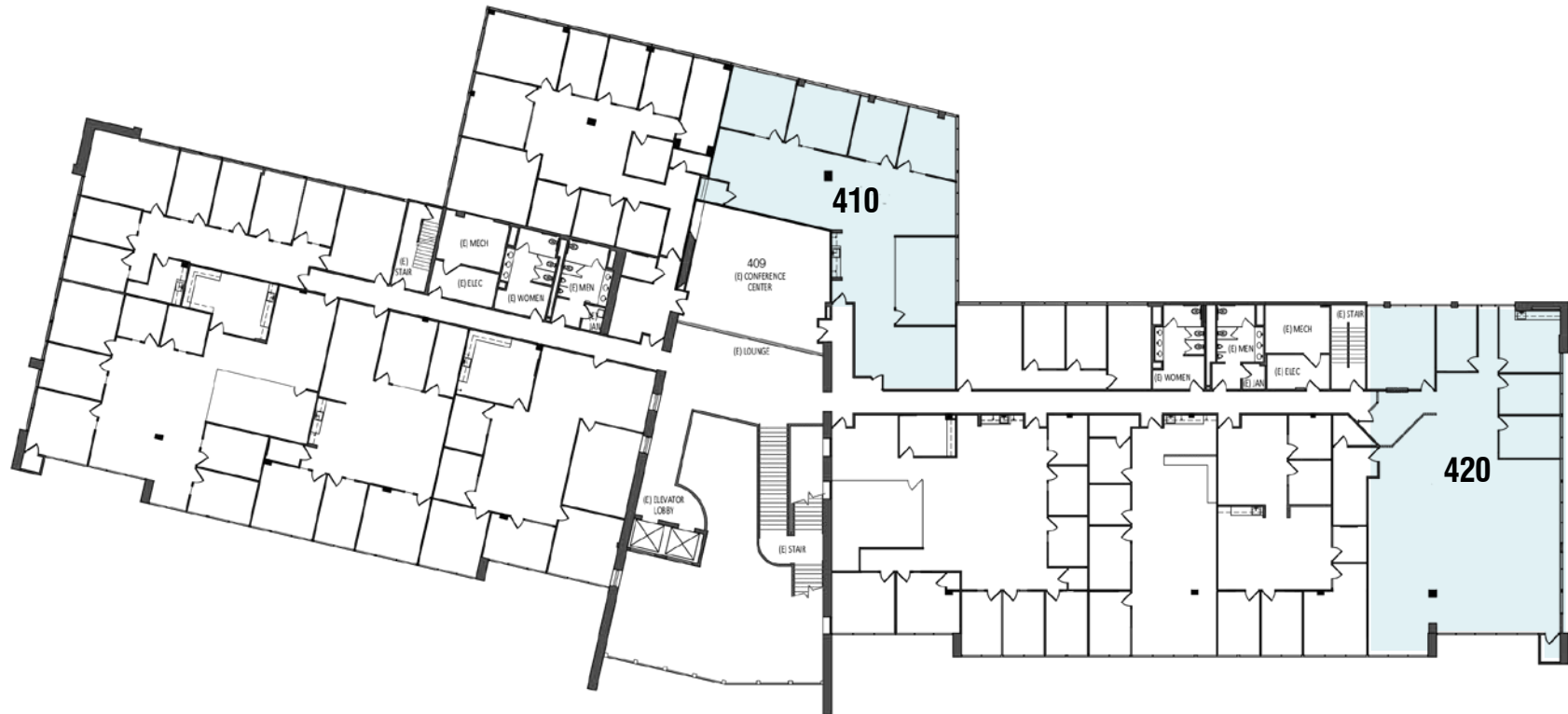
SUITE	SQ. FT.	RATE	DIVISIBLE	AVAILABILITY
300	±2,661	\$2.45 \$2.15 RSF	No	Available Immediately
304	±4,064	\$2.45 \$2.15 RSF	No	Available Immediately



*Not to scale

PENTHOUSE AVAILABILITY

SUITE	SQ. FT.	RATE	DIVISIBLE	AVAILABILITY
410	±3,233	\$2.45 \$2.15 RSF	No	7/1/23
420	±4,354	\$2.45 \$2.15 RSF	No	Available Immediately

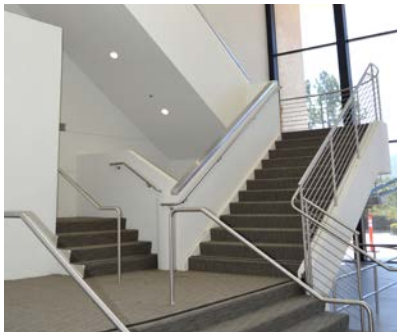


*Not to scale



VALLEVISTA

515 MARIN STREET | THOUSAND OAKS | CALIFORNIA



For more information please contact:

MARK LEONARD

PRINCIPAL

818.449.4414

mleonard@lee-re.com

License ID #01031863

JARED SMITS

PRINCIPAL

818.444.4986

jsmits@lee-re.com

License ID #01839532

 nearon

 **LEE &
ASSOCIATES**

COMMERCIAL REAL ESTATE SERVICES

Lee & Associates® - LA North/Ventura, Inc.

Corporate ID #01191898

A Member of the Lee & Associates®

Group of Companies

26050 Mureau Rd., Suite 101, Calabasas, CA 91302

P:818.223.4388 F:818.591.1450

www.lee-associates.com